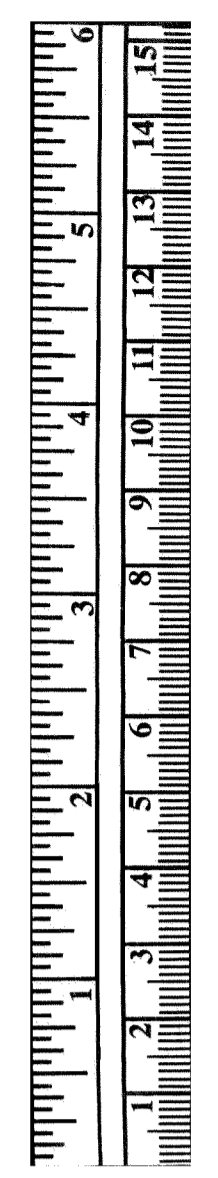


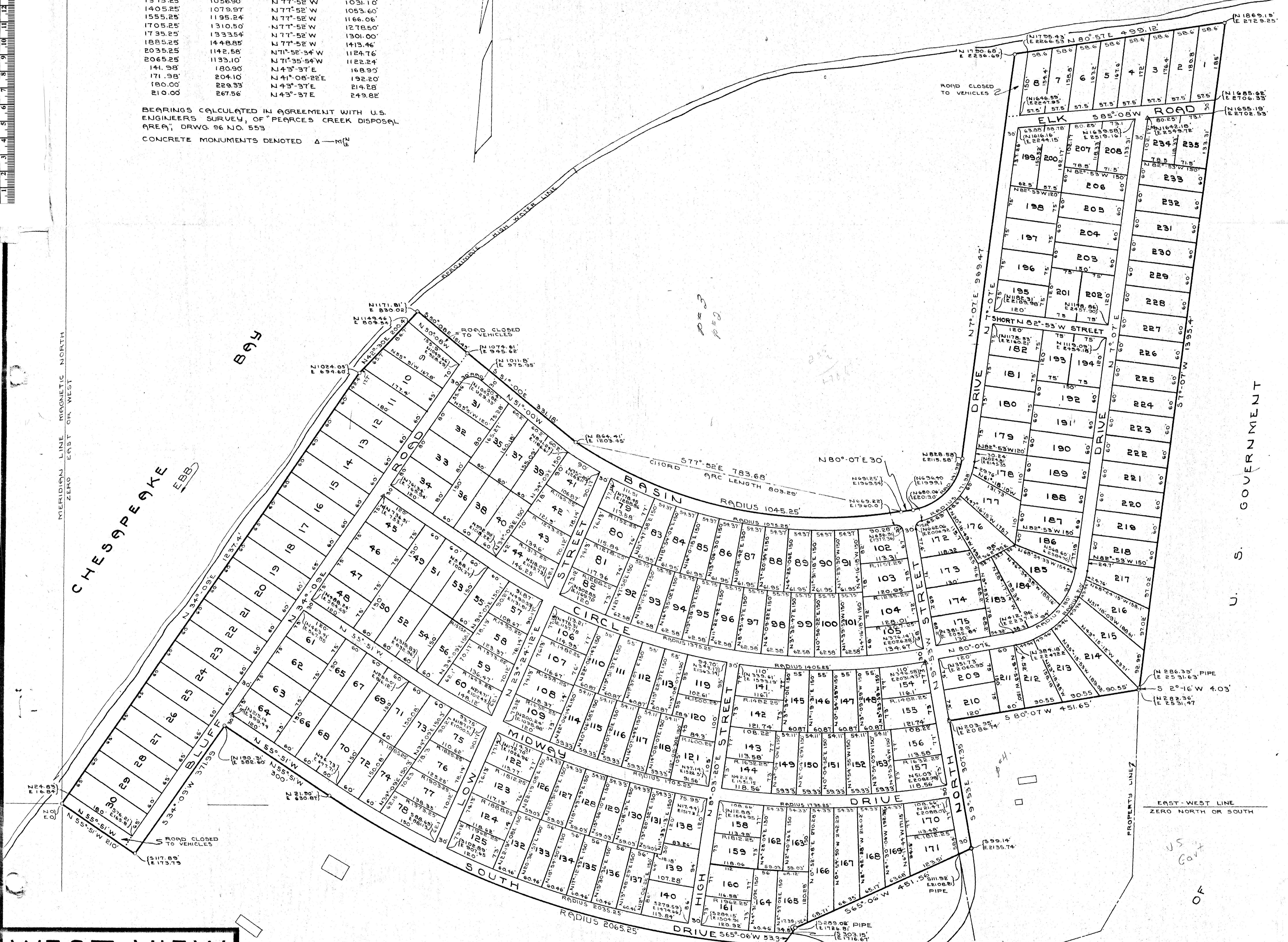
NOTES

RADIUS	ARC LENGTH	BEARING OF LONG CHORD	LENGTH OF LONG CHORD
1075.25	811.30	N77°27'36" W	792.28
1225.25	941.63	N77°52' W	918.64
1375.25	1056.90	N77°52' W	1031.10
1405.25	1079.97	N77°52' W	1053.60
1555.25	1195.24	N77°52' W	1166.06
1705.25	1310.50	N77°52' W	1278.50
1735.25	1333.54	N77°52' W	1301.00
1885.25	1448.85	N77°52' W	1413.46
2035.25	1564.16	N77°52' W	1525.92
2065.25	1587.20	N77°52' W	1548.42
141.98	1133.10	N71°35'54" W	1122.24
171.98	180.90	N43°37' E	168.90
180.00	204.10	N41°08'22" E	192.20
171.98	229.33	N43°37' E	214.28
210.00	267.56	N43°37' E	249.82

BEARINGS CALCULATED IN AGREEMENT WITH U.S. ENGINEERS SURVEY, OF "PEARCES CREEK DISPOSAL AREA", DRWG. 96 NO. 553  
 CONCRETE MONUMENTS DENOTED  $\Delta$  — M<sup>N</sup>



ELK RIVER



**WEST VIEW SHORES**  
 LOCATED ON CHESAPEAKE BAY AT THE MOUTH OF THE ELK RIVER EARLEVILLE-CECIL COUNTY-MARYLAND  
 1947 SCALE 1"=100'

THE REQUIREMENTS OF SECTIONS 72A, 72B, 72C OF ARTICLE 17 OF THE ANNOTATED CODE OF MARYLAND, 1939 EDITION (TITLE: CLERKS OF COURT, SUB-TITLE: CLERKS OF CIRCUIT COURTS) AS FAR AS THEY RELATE TO THE MAKING OF THIS PLAN AND SETTING OF THE MARKERS, HAVE BEEN COMPLIED WITH.  
 SIGNED: *Paul D. Jones*  
 OWNER OF PROPERTY SHOWN HEREON

BY *E. A. Jones*  
 AND *Ralph A. Crothers*  
 PROFESSIONAL ENGINEER & SURVEYOR'S LICENSE NO. 1065